

DECISION TREE OF CHOICES, OPTIONS, AND CONSEQUENCES FOR INDIVIDUALS REQUIRED TO REGISTER WITH THE U.S. SELECTIVE SERVICE SYSTEM

Hexagonal orange boxes are points at which registrants/draftees have to make choices. Choices are shown by red lines. Some are yes or no decisions, others have multiple choices.

This diagram shows decisions about whether or not to register with the Selective Service System. A second diagram shows what can happen after you register, if you register and if there is a draft.

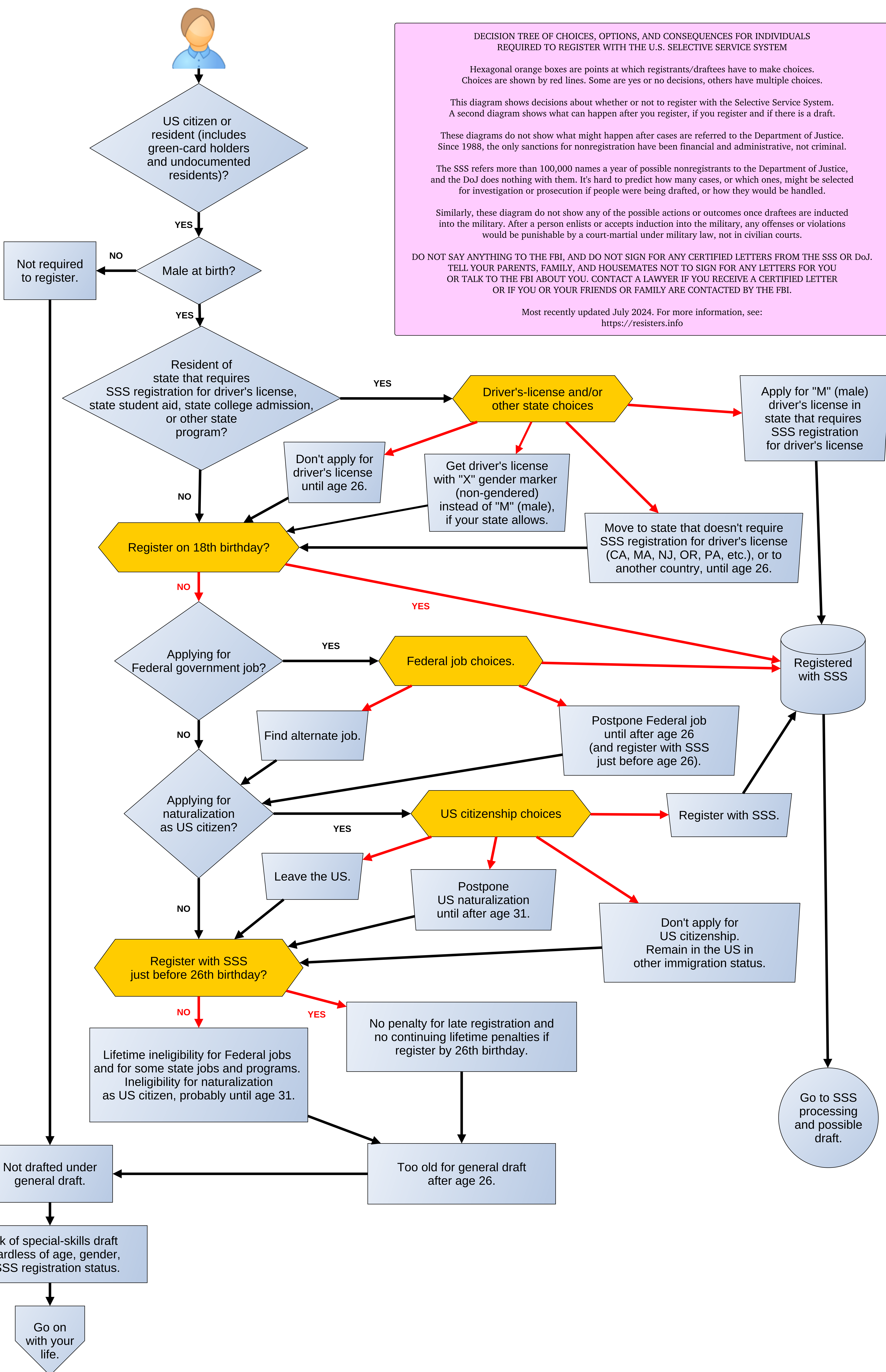
These diagrams do not show what might happen after cases are referred to the Department of Justice. Since 1988, the only sanctions for nonregistration have been financial and administrative, not criminal.

The SSS refers more than 100,000 names a year of possible nonregistrants to the Department of Justice, and the DoJ does nothing with them. It's hard to predict how many cases, or which ones, might be selected for investigation or prosecution if people were being drafted, or how they would be handled.

Similarly, these diagram do not show any of the possible actions or outcomes once draftees are inducted into the military. After a person enlists or accepts induction into the military, any offenses or violations would be punishable by a court-martial under military law, not in civilian courts.

DO NOT SAY ANYTHING TO THE FBI, AND DO NOT SIGN FOR ANY CERTIFIED LETTERS FROM THE SSS OR DoJ. TELL YOUR PARENTS, FAMILY, AND HOUSEMATES NOT TO SIGN FOR ANY LETTERS FOR YOU OR TALK TO THE FBI ABOUT YOU. CONTACT A LAWYER IF YOU RECEIVE A CERTIFIED LETTER OR IF YOU OR YOUR FRIENDS OR FAMILY ARE CONTACTED BY THE FBI.

Most recently updated July 2024. For more information, see: <https://resisters.info>



DECISION TREE OF CHOICES, OPTIONS, AND CONSEQUENCES FOR INDIVIDUALS WHO REGISTER WITH THE U.S SELECTIVE SERVICE SYSTEM

Hexagonal orange boxes are points at which registrants/draftees have to make choices. Choices are shown by red lines. Some are yes or no decisions, others have multiple choices.

This diagram shows what can happen after you register, if you register and if there is a draft. The previous diagram shows decisions about whether or not to register.

These diagrams do not show what might happen after cases are referred to the Department of Justice.

It's hard to predict how many cases, or which ones, might be selected for investigation or prosecution if people were being drafted, or how they would be handled.

Similarly, these diagram do not show any of the possible actions or outcomes once draftees are inducted into the military. After a person enlists or accepts induction into the military, any offenses or violations would be punishable by a court-martial under military law, not in civilian courts.

DO NOT SAY ANYTHING TO THE FBI, AND DO NOT SIGN FOR ANY CERTIFIED LETTERS FROM THE SSS OR DoJ.

Most recently updated July 2024. For more information, see: <https://resisters.info>

